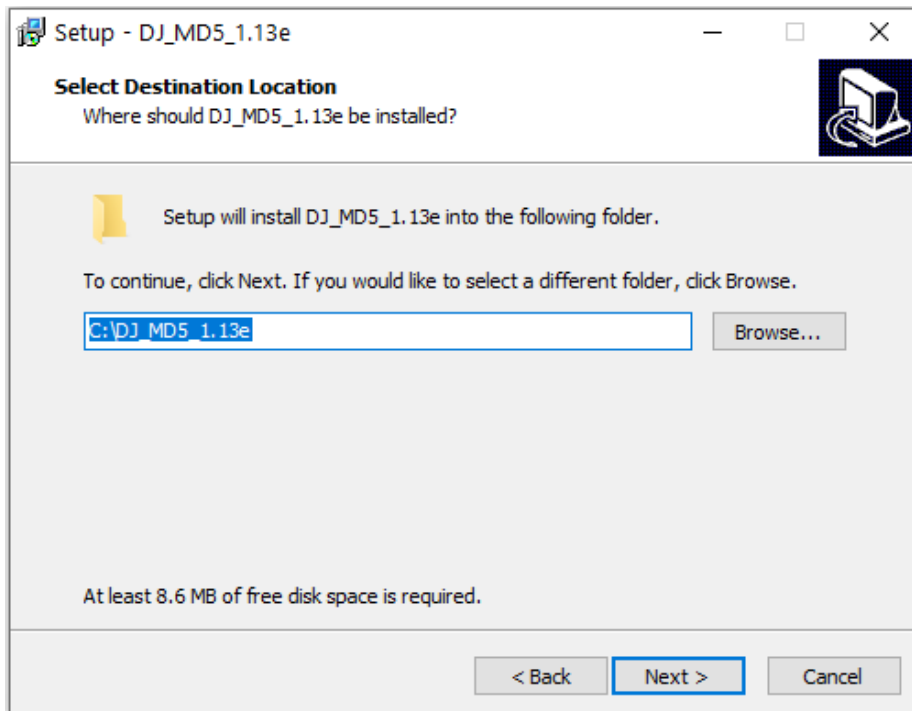


## ALINCO DJ-MD5T Series Firmware Update Instructions.

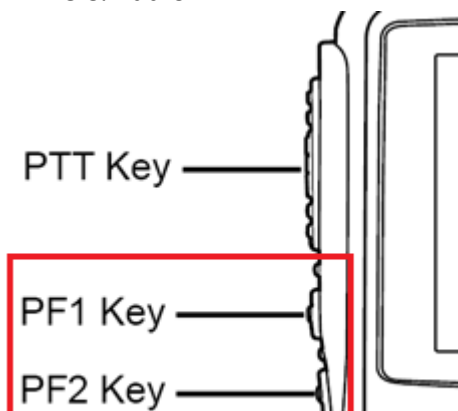
Please download the latest CPS Utility v1.13e and FW v1.13e below

[https://www.remtronix.com/downloads/DJ-MD5T\\_CPSv1.13e\\_FWv1.13e.zip](https://www.remtronix.com/downloads/DJ-MD5T_CPSv1.13e_FWv1.13e.zip)

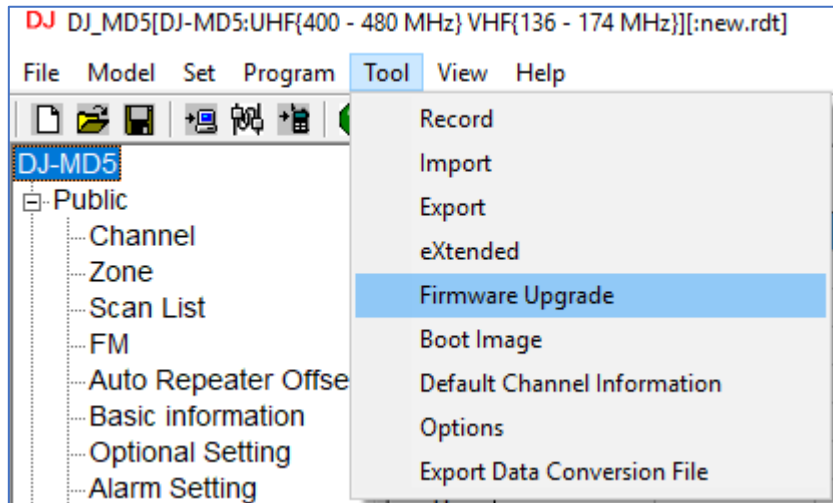
1. Uninstall previously installed CPS Utility 1.xx.
2. Unzip and Install latest CPS 1.\*\* Utility/FW. By Default, the Installation set for "Drive C". Make changes to reflect the Drive you and to install this Utility to. Most cases should be "C:/Program Files (x86)\DJ\_MD5\_1.13e"



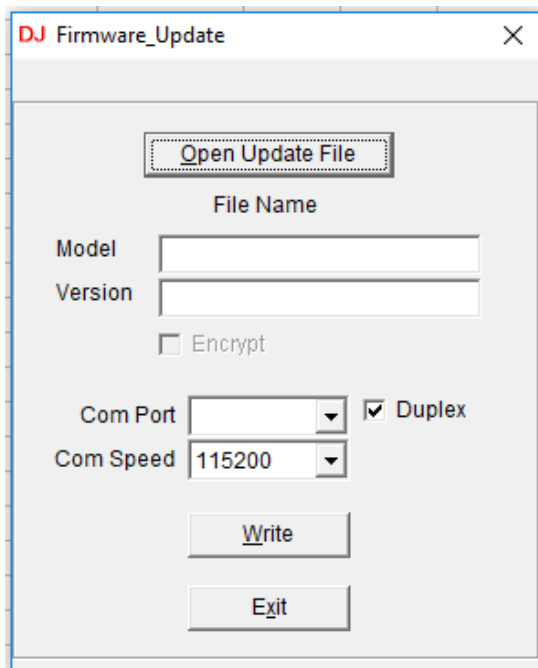
3. Backup your current Radio Data and save. (Codeplug)
4. **"RUN"** the DJ\_MD5\_1.13e CPS Utility in windows under **"Administrator"** mode.
  - Turn ON the Unit with **PF1 + PF2** Buttons Pressed. You will see a "RED" Flashing LED upper right top corner of the screen indicating your Unit is now on Firmware Update Mode. Plug in the USB Cable to PC & Radio



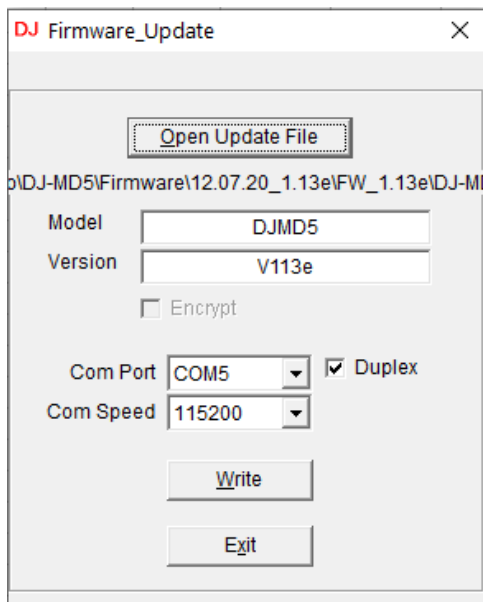
5. Open up the CPS Utility and Select “Tools” from the Top Menu and select “Firmware”



6. Locate the Firmware Data and select the “DJ-MD5-COM\_V1.13e\_20201205.spi” file data.



7. Choose the appropriate COM Port and lower the COM Speed to 115200



8. Select option "Duplex" and write the FW to your unit.
9. If all goes well, you should be able to FLASH with latest Firmware successful.  
Unit will Initialize and return to its original screen display status.
10. **Recommend** performing a Factory **RESET** after firmware update.

11. If you encounter and ERROR Message "Run-Time error '5'" You will need to run the CPE/Clone Utility in "Administrator" mode.

- To Run the CPS Utility in Administrator mode (Place the Mouse cursor on "DJ\_MD5\_1.13e" icon and Right click the Mouse button)
- Select "Properties" and click on "Compatibility"
- Check on "Run this program as an Administrator"

